

Conservation Commission Meeting  
Town Offices  
Monday May 18, 2025 at 7pm

**Members:** Evan Abramson, Karen O'Neil, Janell Howard

**Other Attendees:** John Dunphy, Ward Smith, Andrea Rasmussen

Evan started the meeting at 7:05pm

- John Dunphy and Ward Smith presented a document labeled Restoration of Impacted Wetlands Services and Buffer Zone, West Leyden Road (addendum)
  - Discussion on the West Leyden road logging and the types of trees and plants for replanting mentioned in the document. The plan is to seed vegetation once the timber mat is removed.
  - Discussion on the site being flagged for wet lands. Adequate signs need to be posted for anyone who is seeking to purchase the property to know where the wetlands are so that people are educated on how much can be cleared without meeting with the Con Com.
  - Discussion on the updated map and the completed wetlands markings.
  - The Conservation Commission will do a site assessment when the signage is completed.
  - Discussion on the plan for the mat removal. Dry conditions need to happen before the bridge can be removed, it's too wet right now.
  - Discussion on the plan for planting in the fall. The mat will be removed between July and September when the land is dry enough, then the planting can happen in the fall.
  - Discussion on types of trees and shrubs to be planted, including caging the trees.
- No update on the Cowan culvert yet.
- Update on the 45 Coates Rd project - they submitted a plants list.
- The next meeting we will go over the Open Space and Recreation plan plant section.
- Discussion on the knotweed plan and the plan to eradicate the knotweed without the use of chemicals and who will represent the Conservation Commission at the Annual Town Meeting. Janell will be there so she will answer any questions that may come up.
- Discussion on the permanent bridge on the Penfields property, it has been cleared by an engineer and is structurally sound.
- Discussion on the FRCOG pollinator corridor and ways to share information in Leyden Life.

Next meeting:

Logging on west Leyden road

Open space plan - plants

Cowan update  
FRCOG pollinator corridor

**Motion:** Karen moved, and Janell seconded to adjourn the meeting 8:16pm.

Respectfully submitted,  
Janell Howard



Photo 3: Maple Seedlings in Logged Buffer Zone



## Wendell Wetland Services

105 Montague Road  
Wendell, MA 01379  
(978) 544-5607  
ward.ves@gmail.com

May 19, 2025

Leyden Conservation Commission  
7 Brattleboro Road  
Leyden, MA 01301

Re: Restoration of Impacted Wetlands and Buffer Zone,  
West Leyden Road

Dear Commission Members:

On behalf of John Dunphy, Wendell Wetland Services (WWS) is providing you with this report in partial compliance with the Enforcement Order that was issued in August of 2024 and the email dated 3/24/25.

### Wetland Delineation and Survey

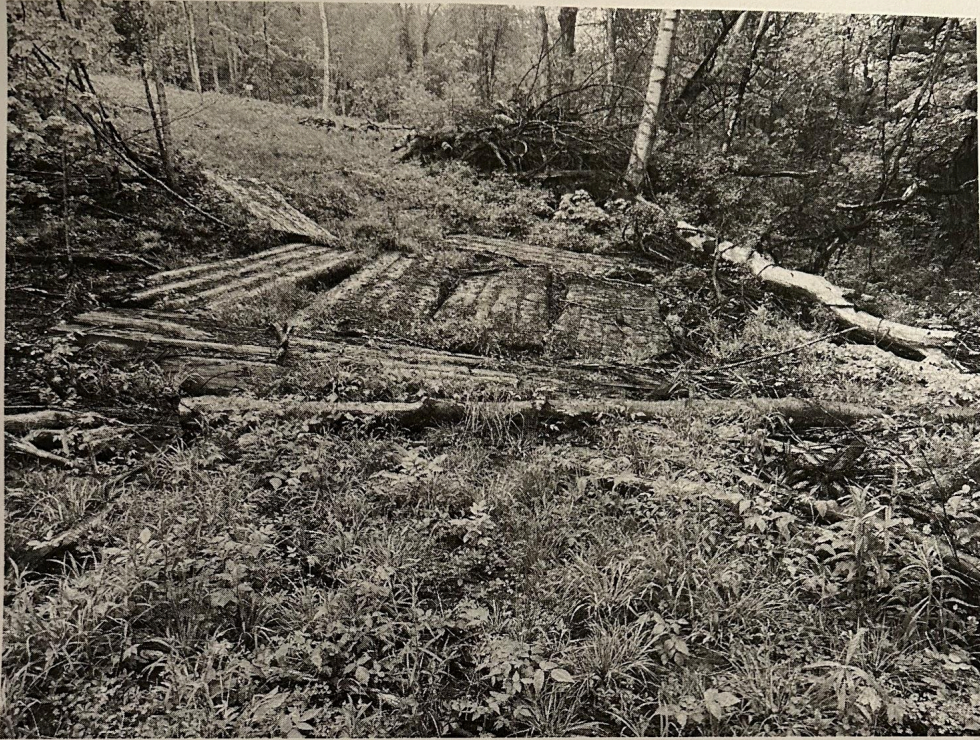
The additional wetland boundary was marked in the field with consecutively numbered pink "wetland delineation" flagging tape on May 18, 2024. The delineation utilized both vegetation and hydrology as outlined in the Regulations at 310 CMR 10.55 and in the DEP handbook *Massachusetts Handbook for the Delineation of Bordering Vegetated Wetlands, Second Edition* (2022). Hydrophytic Vegetation was based upon the US Fish and Wildlife Service's *National List of Plant Species that Occur in Wetlands* (2020), as well as all plant species listed in the Act. Wetland hydrology includes a high water table, water-stained leaves, and hydric soils. Hydric soils were determined based upon the interagency document *Field Indicators for Identifying Hydric Soils in New England, Version 4* (2019).

The new wetland boundary was surveyed and has been plotted onto the Site Plan by Green River Survey with a revision date of May 19, 2025.

### Impacted Wetlands

The construction of a logging road crossed the wetlands and small intermittent stream on timber matting (see photo 1). In addition, trees were cut and machinery crossed the wetland in an upstream location to the west. Total impacts within the BVW resource area are 1,412 square feet.





**Photo 1: Timber Mat Crossing of Wetland**

#### **Buffer Zone Impacts**

The logging road crosses the buffer zone on both sides of the intermittent stream and wetland crossing. Fortunately, herbaceous plants have quickly become established on the logging road, which has stabilized the soils. Tree cutting occurred on almost an acre of buffer zone, although much of this area was not clear-cut (see photo 2). In addition, there are numerous maple seedlings growing in the buffer zone (see photo 3). The limit of work line has been marked by signage (see photo 4).



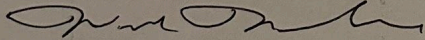
Following restoration, a PWS will inspect the site to ensure compliance with the Restoration Plan. A report, complete with site photographs, will be submitted to the Leyden Conservation Commission outlining the completed work.

The site will then be monitored once a year. Reports will be sent to the Leyden Conservation Commission by November 1<sup>st</sup> of 2026 and 2027. Recommendations for additional planting and seeding will be made at the time of inspection if any problems are noted.

The restored BVW and Buffer Zone will be deemed successful if at least 75% of the area is re-vegetated within two years.

Please feel free to contact me if you would like to discuss this report.

Sincerely,  
Wendell Wetland Services



Ward W. Smith, SPWS  
Senior Professional Wetland Scientist





Photo 4. Limit of Work Sign





Photo 2: Logged Buffer Zone



### Proposed Restoration Sequence

1. The timber matting is proposed to be removed using a mini-excavator on rubber tracks, being careful to disturb as little as possible. Machinery will reach out to the mats from the "upland" side of the wetland boundary. This work should only be done when the site is dry, such as the summer.
2. The stream bank and the restored wetland will be sown with New England *Wetmix* at greater than recommended rates. Approximately one pound of the seed mixture is proposed to be used.
3. The 1,412 square feet of impacted BVW will be planted with the following trees and shrubs: Trees will be planted at approximately 10 foot spacing, and shrubs at six foot spacing. All plants will be container grown, which have much better survival than bare root.

<u>Species</u>	<u>number</u>	<u>size</u>
red maple ( <i>Acer rubrum</i> )	10	18-24"
yellow birch ( <i>Betula alleghaniensis</i> )	5	18-24"
winterberry holly ( <i>Ilex verticillata</i> )	14	18-24"
highbush blueberry ( <i>Vaccinium corymbosum</i> )	13	18-24"
silky dogwood ( <i>Swida amomum</i> )	13	18-24"

4. The 9,170 square feet of impacted Buffer Zone within 30 feet of the wetland boundary will be planted with the following trees and shrubs, with particular attention given to planting in the logging road. Trees will be planted at approximately 15 foot spacing, and shrubs at 10 foot spacing. All plants will be container grown, which have much better survival than bare root.

<u>Species</u>	<u>number</u>	<u>size</u>
red oak ( <i>Quercus rubra</i> )	21	18-24"
red maple ( <i>Acer rubrum</i> )	20	18-24"
witch hazel ( <i>Hamamelis virginiana</i> )	31	18-24"
nannyberry ( <i>Viburnum lentago</i> )	30	18-24"
shadbush ( <i>Amalanchier canadensis</i> )	30	18-24"

### Monitoring

Following approval of this Restoration Plan by the Commission, it is proposed to have the matting removed by September 1, 2025, weather allowing. Planting is proposed to be completed by October 15, 2025.



